

# KOMATSU®

## PC45MR-3 PC55MR-3

**PC**  
**45**  
**MR**

### HORSEPOWER

Gross: 29.5 kW 40.1 HP / 2400 min<sup>-1</sup>

Net: 28.5 kW 39.0 HP / 2400 min<sup>-1</sup>

### OPERATING WEIGHT

PC45MR-3: 4795 kg

PC55MR-3: 5160 kg

### BUCKET CAPACITY

PC45MR-3: 0.055 – 0.14 m<sup>3</sup>

PC55MR-3: 0.055 – 0.16 m<sup>3</sup>



Photos may include optional equipment.



**WALK-AROUND**



**BEST PERFORMANCE EVEN IN NARROW SPACE**

- Short Tail and Small Swing Radius
- Wide Angle Swing Boom
- Good Combination of Long Leach and Good Lifting Capacity

**HIGH RELIABILITY STRUCTURE**

- High Strength X-track Frame
- High Durability Bracket with Large Diameter Swing Pin
- Built-in Hydraulic Hoses with Protector

**USER FRIENDLY SAFETY AND COMFORT**

- Two-post ROPS (ISO 3471) Canopy Good Visibility
- Large Entrance and Foot Space

**EASY MAINTENANCE**

- Thermal and Fan Guards
- Tilting Cab and Full Open Covers
- Front Bonnet: Fuel Tank Refilling

**FIRST CLASS COMFORT (CAB OPTIONAL)**

- An Optimal Work Environment
- Comfortable Operator's ROPS (ISO 3471) Cab

**KOMTRAX**

- Equipment Management Support

**PC45/55MR-3**

<b>HORSEPOWER</b>	Gross: 29.5 kW 40.1 HP / 2400 min <sup>-1</sup>
	Net: 28.5 kW 39.0 HP / 2400 min <sup>-1</sup>
<b>OPERATING WEIGHT</b>	4795 / 5160 kg
<b>BUCKET CAPACITY</b>	0.055 – 0.14 / 0.055 – 0.16 m <sup>3</sup>



## BEST PERFORMANCE EVEN IN NARROW SPACE

### Outstanding stability is Delivered with Short Tail and Swing Boom



#### Work Machine Speed Up

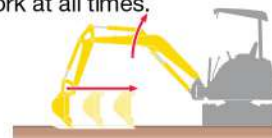
Work equipment speed is faster than current model.  
Speed-up ratio of work machine.

Work machine	PC45MR-3	PC55MR-3
Boom-up speed	7 % UP	7 % UP
Arm-dump speed	7 % UP	11 % UP

#### Closed-center load sensing system

The pressure-compensated Closed-center load sensing system ensure each actuator works according to its control input.

These give operator precise control and ideal work at all times.



#### Strong Digging Force

Due to the strong force it is possible to digging smoothly even on hard ground.

##### PC45MR-3

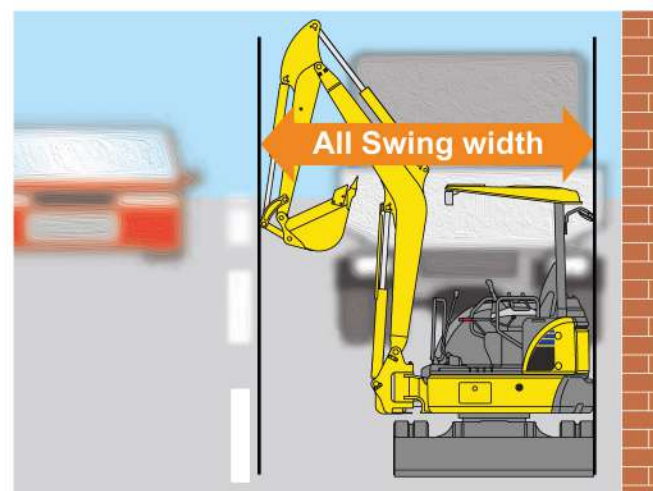
Bucket Digging Force: **34 kN**  
Arm Crowd Force: **22 kN**

##### PC55 MR-3

Bucket Digging Force: **39 kN**  
Arm Crowd Force: **24 kN**

#### Short Tail and Small Swing Radius

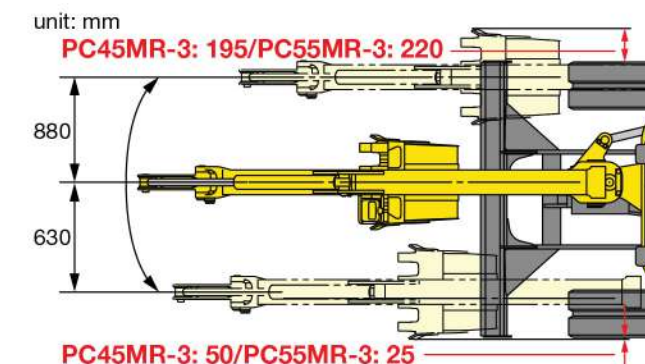
Operator can worry less about rear swing impact even in narrow spaces with combination of only 80 mm projection over the track and small swing radius.



Item	PC45MR-3	PC55MR-3
All swing width	2830 mm	2800 mm

#### Wide Angle Swing Boom

The swing boom's angle is wide and realizes direct digging close to the edge of wall.

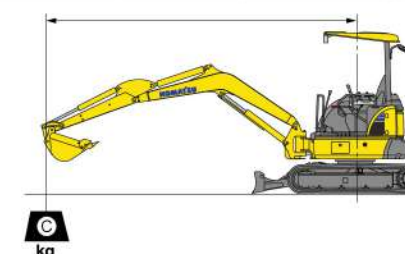


#### Good Combination of Long Leach and Good Lifting Capacity

The enlarged boom cylinder and good stability increase the lifting capacity and long reach.

Max. Digging Reach	PC45MR-3	PC55MR-3
With STD arm	5735 mm	6220 mm
With long arm	6130 mm	6570 mm

Lifting capacity with STD arm and Blade on ground	Posture	PC45MR-3	PC55MR-3
At 3 m	FRONT	<b>1195 kg</b>	<b>985 kg</b>
At max. reach	SIDE	505 kg	435 kg



#### Traveling Performance and Functions to Make Operation on Site Smoother

Automatically senses the travel load and shifts between high speed and low speed travel. This function and strong traction force (Max: 3400 kg) make the movement on site smoother.

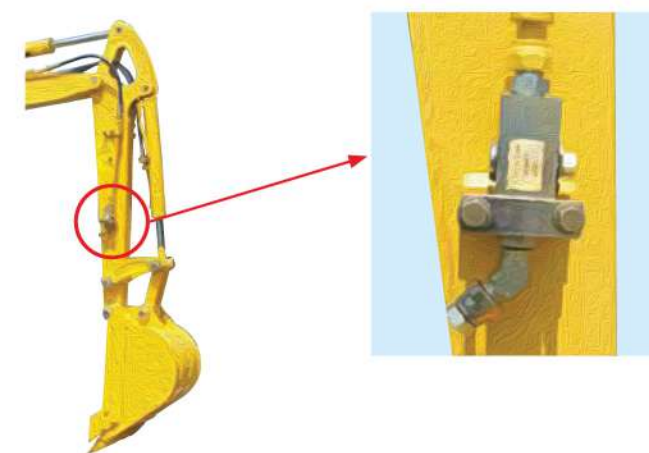
Travel speed selector switch



Travel speed	PC45MR-3	PC55MR-3
High (km/h)	<b>4.6</b>	
Low (km/h)	<b>2.8</b>	

#### Auxiliary Hydraulic Flow (Optional)

Large auxiliary hydraulic flow can utilize attachments more efficiently. High output auxiliary hydraulics allow variety of attachments to be used.



#### Tie-Down or Anchor Points

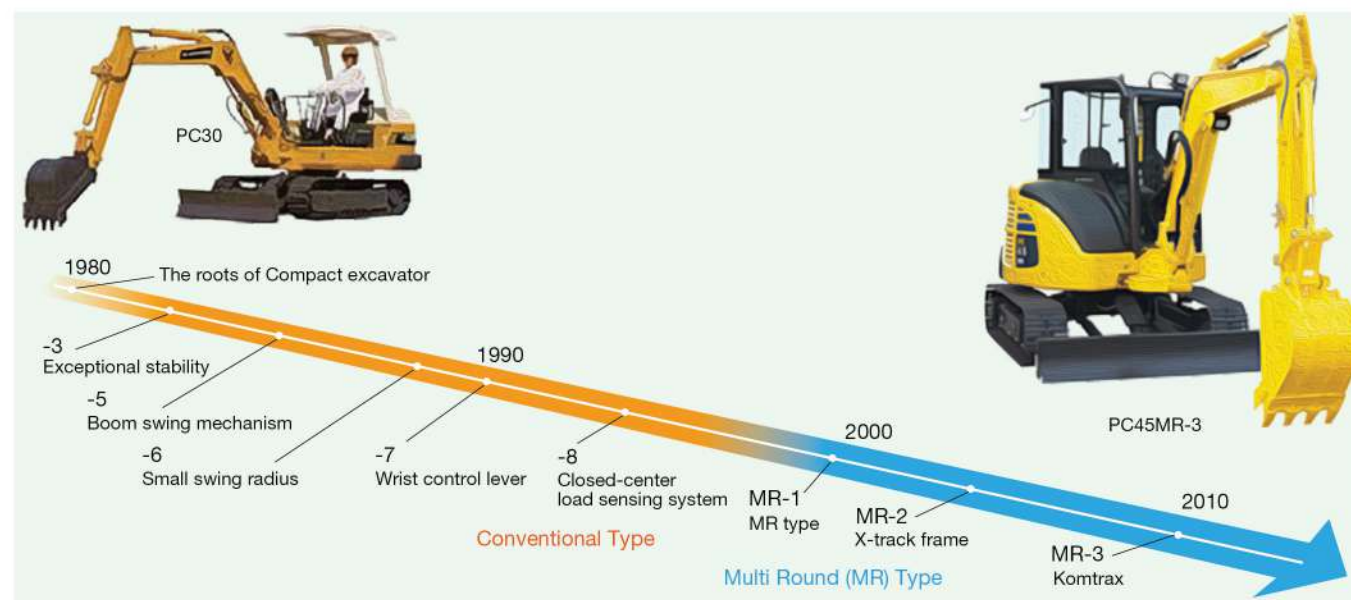
Large tie-down or anchor points in the track frame and blade allow the machine to be secured quickly for transport.





## High Durability and Quality

### 30 years History of Compact Hydraulic Excavator



### Evolution of Compact Hydraulic Excavator

The foundation philosophy of Komatsu is to pursue quality and reliability.

Compact hydraulic excavator has a long history and the quality improvement has been repeated since 1981.

### Durable Improvement and Extensional of the Periodical Maintenance Time

#### High-strength Brass Bushes



High-strength brass bushes are adopted (except around bucket) and extend the lubrication interval to 500 hours.

#### Long life filters to protect your machine component

Eco White Filter extends the replacement time of the hydraulic oil filter to every 2000 hours.

Item	Replacement frequency
Engine Oil Filter	Every 500 hours
Engine Oil	
Fuel Filter	
Hydraulic Filter (Eco White)	Every 2000 hours
Hydraulic Oil	

Extension time of engine oil and fuel filter extended every 500 hours.

#### High strength work equipment

It has durability to withstand any application. Komatsu thoroughly investigated and analyzed the customer's job site and built in working machines with sufficient.

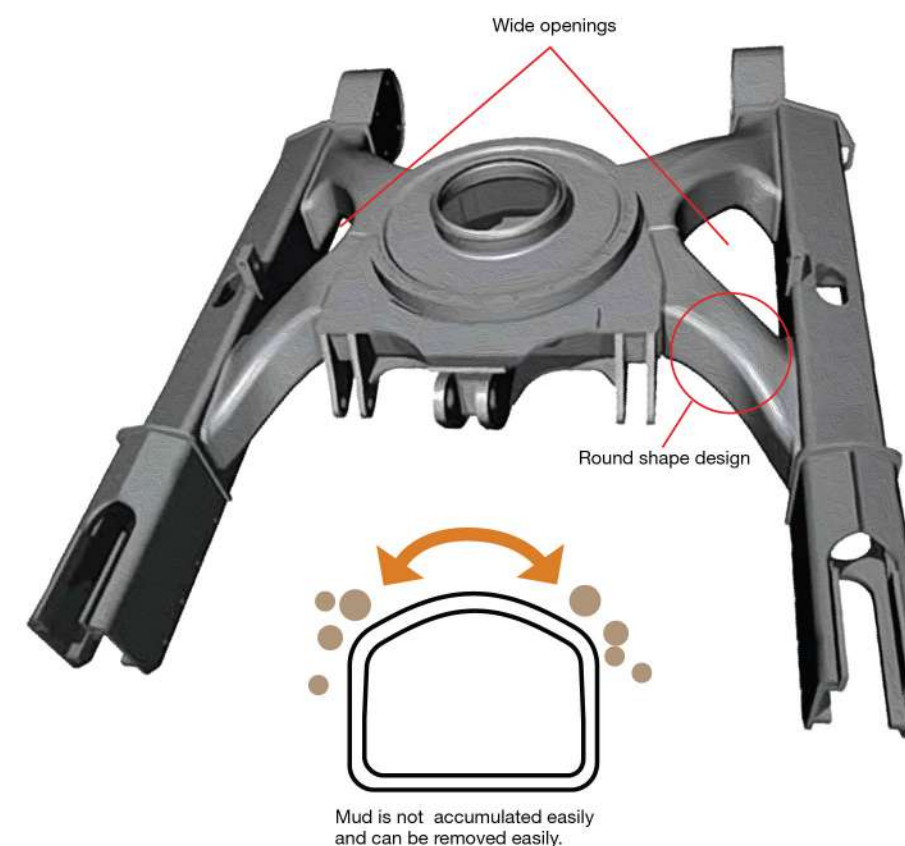
#### Sheet metal of the decoration structure

Easy to repair and cost of repairing is reduced.



### High Strength X-track Frame

The new "X-frame" ensures maximum stress resistance and optimal stress distribution. Its shape makes the machine a lot more rigid and reliable. In addition, it facilitates the regular undercarriage cleaning operations and the spoils removal process.



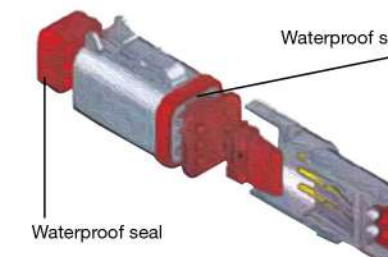
### Face Seal

O-ring face seals having high sealing performance are used for hydraulic joints.



### Sealed Connectors

Water-resistant sealed connectors seal tight and have reliability.



### A Chevron-shaped Boom Cylinder Guard

This design reduces damage to the cylinder caused by interference of the breaker, hitting against the dump vessel, etc.



### High Durability Bracket with Large Diameter Swing Pin

It has high durability and maintains suitable clearances between pin and bushing after long-term operation. Bracket is rigid and the parts around swing has high durability.



### Built-in Hydraulic Hoses with Protector

The hose joints between the arm and boom have been built in. The piping at the boom foot of MR-3 series is also built in to further heighten reliability.





**USER FRIENDLY SAFETY AND COMFORT**

**Superior Comfort Brings Best Performance**



**Safety Lever**

The engine can start only when the lever is in the lock position. This system prevents unexpected accident.

Lock position



Unlock position



**Two-post ROPS (ISO 3471) Canopy Good Visibility**

Two post ROPS canopy not only enable operator to protect from accident such as roll over but also the advantage of good front visibility. The operator can watch 360° field view.



**Wide Operator Seat**

Large operator seat reduce stress.



**New Design Monitor**

New design monitor make checking machine condition easily.



**Large Entrance and Foot Space**

Operator can get on and off easily.



**Light for Safety**

A working lamp for work equipment is provided on the boom bottom to prevent damage due to accidental contact.



This travel lamp provides an increased visibility both in a night operation and in the travel position.





## EASY MAINTENANCE

### Easy Maintenance to Reduce Cost



#### Thermal and Fan Guards are Placed Around High-temperature Parts of Engine and Fan Drive

These guard ensure safety during maintenance.



#### Tilting Cab and Full Open Covers

The wide opening engine bonnets provide a quick access to daily inspection points. The fuel and the hydraulic oil tanks are located under the side bonnet, in a safe and easy-to-reach position. In addition, the cab tilts back for major maintenance tasks much easier.



Rear bonnets for quick engine checks, simple inspections, cleaning of the radiators and easy access to the battery.

#### Easy Clean Side-by-side Cooling Section

The cooling efficiency of the cooling section is increased by utilizing the side-by-side coolers. The side-by-side coolers allow easy cleaning.



#### Front Bonnet: Fuel Tank Refilling

Engine food cover is opening full and Large-sized fuel filler that reduces fuel flow-back is utilized.





## FIRST CLASS COMFORT (CAB OPTIONAL)

### A Large-sized Cab is a Competitive Advantage for Compact Excavator



#### An Optimal Work Environment

Despite its compact size, the PC45/55MR-3 offers unequalled comfort. The spacious cab was developed with exceptional care to details, and the work environment is quiet and comfortable. Special attention was given to the operator: ergonomic and dedicated Pressure Proportional Control (PPC) controls, and, in option, an efficient air conditioning and ventilation system to guarantee optimal thermal comfort. The upper rail sliding door makes getting in and out of the machine very easy and safe in any situation.



#### Comfortable Operator's ROPS (ISO 3471) Cab

The large rear glass provides the operator excellent rear visibility.



#### Sliding Door

Operator can get in and out of the machine very easy.



#### Large-capacity Fresh-air-in Air Conditioner (Cab)

The operator can work comfortably in all seasons because of the large-capacity fresh-air-in air conditioner and defrosting system with well located air flow outlets.



#### Front Window Pull-up

Smooth opening and closing is possible.



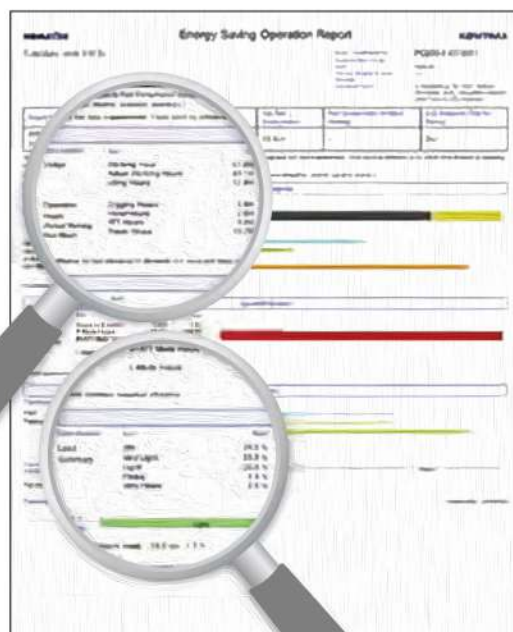


## KOMTRAX

**The Komatsu remote monitoring and management technology provides insightful data about your equipment and fleet in user-friendly format.**

### Energy Saving Operation Report

KOMTRAX delivers the energy-saving operation report based on the operating information such as fuel consumption, load summary and idling time, which helps you efficiently run a business.



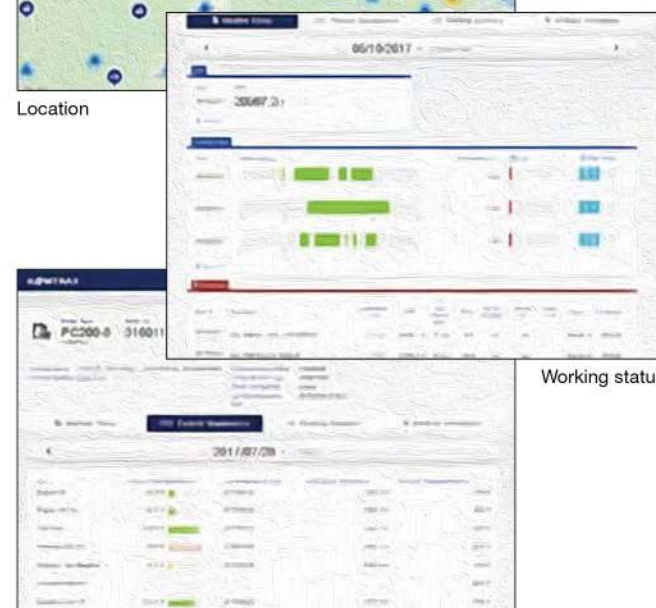
This report image is an example of hydraulic excavator

### Equipment Management Support

Through the web application, a variety of search parameters are available to quickly find information about specific machines based on key factors. Moreover, KOMTRAX finds out machines with problems from your fleet and shows you through an optimal interface.



Location



Working status

Periodic maintenance

The report contents and data depend on the machine model.

### Optimal Strategy for Efficient Work

The detailed information that KOMTRAX puts at your fingertips helps you manage your fleet conveniently on the web anytime, anywhere. It gives you the power to make better daily and long-term strategic decisions.



# ATTACHMENT

### Komatsu Genuine Attachment Tool

Komatsu-recommended attachment tools for hydraulic excavators  
A wide range of attachment tools are provided to suit customers' specific applications.

#### Hydraulic breaker

The hydraulic breaker is an attachment tool used for crushing rock beds and paved surfaces, demolishing concrete structures, etc. The large gas chamber, ideal gas pressure ratio, and long-stroke piston deliver a powerful impact force. Since the breaker unit does not require an accumulator, the number of parts has been reduced, resulting in lower maintenance costs.



#### Crusher

This attachment tool is used for demolishing concrete structures. Since it does not have a striking mechanism and features low noise and low vibration, it is suitable for work in urban areas. The open-close cylinder is equipped with a speed-up valve for increasing work speed.



Primary crusher



Pulverizer

#### Applications of Attachment Tools

Application/ Attachment Tool	Civil Engineering	Demolition	Industrial Waste Disposal	Utility Construction	Rental
Hydraulic Breaker	○	○	○	○	○
Crusher (Primary Crusher)		○			○
Crusher (Pulverizer)		○	○		○

Model	PC45MR-3	PC55MR-3
Hydraulic Breaker	JTHB40	JTHB50
Crusher (Primary Crusher)	JATS500	
Crusher (Pulverizer)	JASC35	



# KOMATSU TOTAL SUPPORT



## Komatsu Total Support

To keep your machine available and minimize operation cost when you need it, Komatsu Distributor is ready to provide a variety of supports before and after procuring the machine.

### Fleet recommendation

Komatsu Distributor can study the customer's job site and provide the most optimum fleet recommendation with detailed information to meet all of your application needs when you are considering to buy new machines or replace the existing ones from Komatsu.

### Product support

Komatsu Distributor gives the proactive support and secures the quality of the machinery that will be delivered.

### Parts availability

Komatsu Distributor is available for emergency inquiry by the customers for genuine, quality guaranteed Komatsu parts.

### Technical support

Komatsu product support service (Technical support) is designed to help customer. Komatsu Distributor offers a variety of effective services to show how much Komatsu is dedicated to the maintenance and support of Komatsu machine.

- Preventive Maintenance (PM) clinic
- Oil & Wear analysis program

### Repair & maintenance service

Komatsu Distributor offers quality repair and maintenance service to the customer, utilizing and promoting Komatsu developed programs.

## Komatsu Reman (Remanufactured) components

Komatsu Reman products are the result of the implementation of the Komatsu global policy which establishes and agrees to reduce the owning, operating and total Life Cycle Costs (LCC) to Komatsu's customer through high quality, prompt delivery and competitively priced in own remanufactured products (QDC).



# SPECIFICATIONS



## ENGINE

Model ..... Komatsu 4D88E-6  
Type ..... Direct injection  
Aspiration ..... Natural  
Number of cylinders ..... 4  
Bore ..... 88 mm  
Stroke ..... 90 mm  
Piston displacement ..... 2.189 L  
Horsepower:  
SAE J1995 ..... Gross 29.5 kW 40.1 HP  
ISO 9249 / SAE J1349 ..... Net 28.5 kW 39.0 HP  
Rated rpm ..... 2400 min<sup>-1</sup>  
Fan drive method for radiator cooling ..... Mechanical  
Governor ..... All speed control, mechanical



## HYDRAULIC SYSTEM

Type ..... Hydrau Mind system  
Main pump:  
Type ..... Variable capacity x 2, gear x 1  
Maximum flow ..... 53.5 x 2 + 33.8 L/min  
Hydraulic motors:  
Travel ..... Variable capacity x 2  
Swing ..... Fixed capacity x 1  
Relief valve setting:  
Implement circuits ..... 26.5 MPa 270 kgf/cm<sup>2</sup>  
Travel circuit ..... 26.5 MPa 270 kgf/cm<sup>2</sup>  
Swing circuit ..... 18.6 MPa 190 kgf/cm<sup>2</sup>  
Pilot circuit ..... 2.9 MPa 30 kgf/cm<sup>2</sup>  
Hydraulic cylinders:  
(Number of cylinders – bore x stroke x rod diameter)  
PC45MR-3  
Boom ..... 90 mm x 696 mm x 50 mm  
Arm ..... 80 mm x 649 mm x 50 mm  
Bucket ..... 70 mm x 580 mm x 45 mm  
Boom offset ..... 90 mm x 630 mm x 50 mm  
Blade ..... 110 mm x 140 mm x 50 mm  
PC55MR-3  
Boom ..... 90 mm x 696 mm x 50 mm  
Arm ..... 85 mm x 733 mm x 55 mm  
Bucket ..... 75 mm x 580 mm x 50 mm  
Boom offset ..... 95 mm x 630 mm x 50 mm  
Blade ..... 110 mm x 140 mm x 50 mm



## DRIVES AND BRAKES

Steering control ..... Two levers with pedals  
Drive method ..... Hydrostatic  
Maximum drawbar pull ..... 42.0 kN 4280 kgf  
Maximum travel speed: High ..... 4.6 km/h  
Low ..... 2.8 km/h  
Service brake ..... Hydraulic lock  
Parking brake ..... Mechanical disk brake



## SWING SYSTEM

Drive method ..... Hydraulic drive  
Swing reduction ..... Planetary gear, double-reduction  
Swing circle lubrication ..... Grease-bathed  
Swing lock ..... Mechanical disk brake  
Swing speed ..... 9.0 min<sup>-1</sup>



## UNDERCARRIAGE

Track frame ..... X-frame  
Shoe type ..... Box section  
Track adjuster ..... Hydraulic type  
Number of shoes (Each side) ..... 39 (steel)  
Number of carrier rollers (Each side) ..... 1  
Number of track rollers (Each side) ..... 4



## COOLANT AND LUBRICANT CAPACITY (REFILLING)

Fuel tank ..... 65 L  
Coolant ..... 8.5 L  
Engine ..... 7.5 L  
Final drive (Each side) ..... 0.8 L  
Hydraulic tank ..... 20 L



## OPERATING WEIGHT (APPROXIMATE)

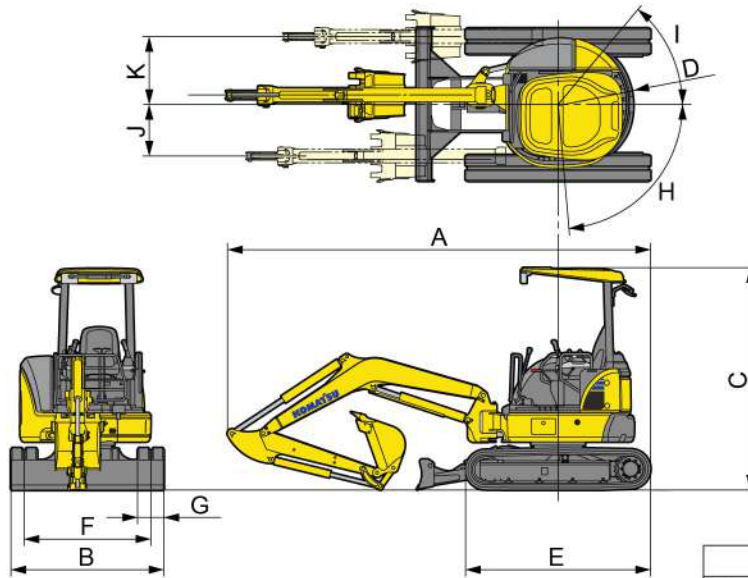
### PC45MR-3

Shoes	Selection	Rubber shoes		Steel shoes	
	Width [mm]	400		400	
Cab / Canopy		Cab	Canopy	Cab	Canopy
Operating Weight [kg]		4915	4795	4980	4860
Ground Pressure [kgf/cm <sup>2</sup> ]		0.26	0.25	0.27	0.26

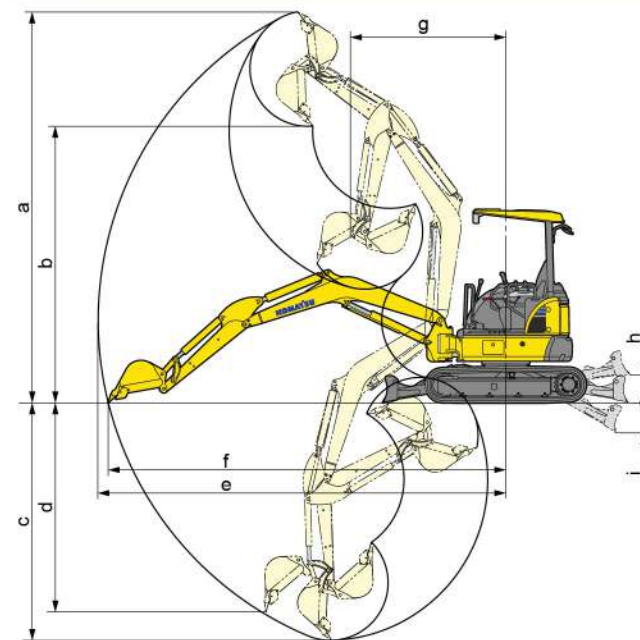
### PC55MR-3

Shoes	Selection	Rubber shoes		Steel shoes	
	Width [mm]	400		400	
Cab / Canopy		Cab	Canopy	Cab	Canopy
Operating Weight [kg]		5820	5160	5345	5225
Ground Pressure [kgf/cm <sup>2</sup> ]		0.37	0.31	0.38	0.32



**DIMENSIONS**

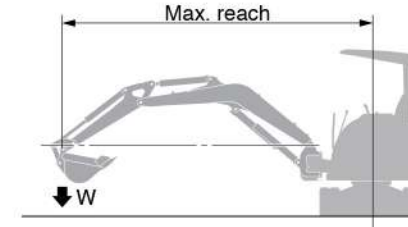
	PC45MR-3	PC55MR-3
<b>A</b> Overall length	5220 mm	5550 mm
<b>B</b> Overall width	1960 mm	1960 mm
<b>C</b> Overall height	2550 mm	2550 mm
<b>D</b> Tail swing radius	1060 mm	1060 mm
<b>E</b> Crawler length	2520 mm	2520 mm
<b>F</b> Track gauge	1560 mm	1560 mm
<b>G</b> Track shoe width	400 mm	400 mm
<b>H/I</b> Boom swing angle deg.	LH85/RH50 deg.	LH85/RH55 deg.
<b>J</b> Bucket offset LH	630 mm	630 mm
<b>K</b> Bucket offset RH	880 mm	880 mm

**WORKING RANGE****Standard Arm Working Range**

	PC45MR-3	PC55MR-3
<b>a</b> Max. digging height	5515 mm	5945 mm
<b>b</b> Max. dumping height	3785 mm	4230 mm
<b>c</b> Max. digging depth	3350 mm	3800 mm
<b>d</b> Max. vertical digging depth	2645 mm	3020 mm
<b>e</b> Max. digging reach	5735 mm	6220 mm
<b>f</b> Max. digging reach at ground level	5575 mm	6070 mm
<b>g</b> Min. swing radius (When boom swing)	2340 mm (1770 mm)	2270 mm (1740 mm)
<b>h</b> Max. blade lift	430 mm	430 mm
<b>i</b> Max. blade depth	330 mm	330 mm

**Long Arm Working Range**

	PC45MR-3	PC55MR-3
<b>a</b> Max. digging height	5780 mm	6215 mm
<b>b</b> Max. dumping height	4060 mm	4495 mm
<b>c</b> Max. digging depth	3770 mm	4160 mm
<b>d</b> Max. vertical digging depth	3060 mm	3380 mm
<b>e</b> Max. digging reach	6130 mm	6570 mm
<b>f</b> Max. digging reach at ground level	5980 mm	6430 mm
<b>g</b> Min. swing radius (When boom swing)	2410 mm (1860 mm)	2380 mm (1840 mm)
<b>h</b> Max. blade lift	430 mm	430 mm
<b>i</b> Max. blade depth	330 mm	330 mm

**LIFTING CAPACITY WITH LIFTING MODE****PC45/55MR-3**

- A: Reach from swing center  
 B: Bucket hook height  
 C: Lifting capacity  
 Cf: Rating over front  
 Cs: Rating over side  
 ●: Rating at maximum reach

	Arm length		2 m		3 m		Maximum	
			Front	Side	Front	Side	Front	Side
PC45MR-3	1375 mm	3 m			*990	*990	*1020	585
		2 m			*1530	1100	*1060	500
		1 m			*2125	1025	*1120	480
		0 m			*2345	995	*1195	505
		-1 m	*3010	1965	*2195	995	*1280	600
	1770 mm	0 m	*1250	1250	*2275	980	*1045	430

	Arm length		2 m		3 m		Maximum	
			Front	Side	Front	Side	Front	Side
PC55MR-3	1640 mm	3 m					*850	500
		2 m			*1435	1140	*885	440
		1 m			*2030	1045	*930	420
		0 m			*2260	1005	*985	435
		-1 m	*2790	1960	*2170	1000	*1050	500
	2000 mm	0 m	*1285	*1285	*2205	1010	*895	390

\*Load is limited by hydraulic capacity rather than tipping. Rated loads do not exceed 87% of hydraulic capacity or 75% of tipping load.

**BUCKET LINEUP****Bucket Line-up**

Category	Capacity (m³)	Width (mm)		Weight (kg)	Number of teeth	Tooth type	PC45MR-3	PC55MR-3
		Without side cutters	With side cutters					
Narrow digging	0.055	300	370	90	3	Vertical	(○)	(○)
	0.11	430	500	95	3		(○)	(○)
General digging	0.14	530	600	110	4		○	
	0.16	580	650	120	5			○

○ : STD (○) : Selectable





## STANDARD EQUIPMENT

### ENGINE:

- Dry type air cleaner, double element
- Engine, Komatsu 4D88E-6
- Fuel pre-filter (With water separator)
- Side-by-side cooling
- Wave fin radiator

### ELECTRICAL SYSTEM:

- Automatic two-speed travel control
- Working lights

### HYDRAULIC SYSTEM:

- Closed-center system with load-sensing
- PPC

### GUARDS AND COVERS:

- Fan guard structure
- Thermal guard

### OPERATOR ENVIRONMENT:

- Rear view mirrors (RH, LH)
- Right seat, reclining with wrist rests

- Seat belt, 78 mm
- Two-post ROPS (ISO 3741) & top guard canopy
- Washable floor mat

### OTHER EQUIPMENT:

- 400 mm rubber shoes
- Standard blade (Weld edge type)
- Travel alarm



## OPTIONAL EQUIPMENT

- Additional working light
- Air conditioner (A/C) (For cab)
- Cigarette lighter (For cab)
- Pattern change valve (ISO - Backhoe) (ISO control pattern (ISO 10968))
- Radiator net
- Radio (For cab)
- Suspension seat, reclining with wrist rests
- ROPS (ISO 3741) & top guard cab with heater, front window washer/wiper, cup holder and ashtray
- Seat belt, 50 mm width

### Pattern change valve

Pattern change valve allows the operator to change easily between ISO control pattern (ISO 10968) or backhoe control pattern.



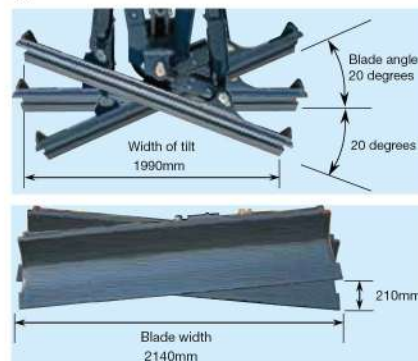
### Optional blade

(Bolt on cutting edge (B.O.C.) type)





### Power angle tilt blade

Power angle tilt blade realizes efficiency improvement of leveling work. The blade is B.O.C type.



### Shoe type

STD		OPT	
400 mm rubber shoes	400 mm steel shoes	400 mm steel shoes with rubber pad	400 mm roadliner
			

<https://home.komatsu/en/>

Printed in Japan 201903 IPAD

**KOMATSU**



**金駿機械**  
GUM CHUN MACHINERY

陳列倉 Show Room: 香港新界石崗粉錦公路DD111 LOT2373&2374 (近橫台山永寧里)  
DD111 LOT2373&2374 Fan Kam Road, Shek Kong, Yuen Long, N.T., Hong Kong  
通訊地址 Mailing Address: P.O. Box No. 729 at Shek Wu Hui Post Office

☎ (852) 2488-9393

☎ (852) 2488-9337

🌐 [www.gumchun.com.hk](http://www.gumchun.com.hk)



CEN00853-00

Materials and specifications are subject to change without notice.  
**KOMATSU** is a trademark of Komatsu Ltd. Japan.