

KOMATSU®

WA50-6

HORSEPOWER
Gross: 29.7 kW 39.8 HP @ 2400 rpm
Net: 28.7 kW 38.6 HP @ 2400 rpm

OPERATING WEIGHT
3675 – 3825 kg 8,100 – 8,430 lb

BUCKET CAPACITY
0.5 – 0.6 m³ 0.7 – 0.8 yd³

WA
50

MINI WHEEL LOADER



Photo may include optional equipment.

WALK-AROUND

Productivity Features

- New high-power engine allows any operation to be carried out with minimal effort.
- Allows easy operation even in narrow spaces. Excellent machine operability and stability.
 - Short overhang structure and increased articulation angle
 - Rear axle oscillation system
 - Long wheelbase and wide tread
- Electronic-control HST allows operation of the machine as you desire.
 - Speed control function
 - Traction control function
- Floor-mounted inching pedal allows easy machine maneuvering for loading.
- Electric auto leveler allows easy operation of the bucket.

• Good dumping clearance and reach
See pages 4 and 5.

Operator Comfort

- Comfortable operator's compartment featuring increased legroom
- Easy operation by simple lever control
 - Electric forward/reverse selector lever
 - Single-lever bucket control
- Very comfortable operator's seat
- Small-diameter steering wheel allows you to operate the machine as you would drive a passenger car.
- Easy-to-clean floor mat flush with the entrance frame

- Newly designed large operator's cab (optional) with wide visibility and comfortable seating
 - Pillar-less front cab glass for excellent visibility
 - Wide operating space
 - Walk through cab
 - Fresh air type heater and defroster as standard equipment
 - Fresh air type air conditioner (optional)

See pages 6 and 7.



Photo may include optional equipment.

Increased Reliability & Serviceability

- Easy-to-maintain designs allow quick and easy daily checks and maintenance.
 - Single-touch full-open hood
 - Remote and collective arrangement of filters
 - Side-by-side cooling system
 - Automatic air bleeding system
 - Pre-cleaner (optional)
- Components that prevent machine failure and improve machine reliability
 - Face-seal type hydraulic hose/tube connectors
 - DT connectors
 - Tapered roller bearings

See page 9.

Additional Features

- ROPS and canopy
- Excellent visibility for secure and reliable operations
- Safe and easy-to-use access ladder
- Anti-slip floor mat
- Large counterweight to protect the rear and rear side sections of the machine
- New boom design permitting excellent front visibility
- High braking performance assures reliable operation.
 - HST dynamic braking
 - Sealed wet-type disc brakes featuring high braking performance and long service life
 - Hand operated parking brake
 - Overrun control system
- Bucket leveler plates allow you to quickly check the angle of bucket.

See page 8.

Environmental Features

- Low emission engine
- Low operation noise

See page 9.

HORSEPOWER
Gross: 29.7 kW 39.8 HP @ 2400 rpm
Net: 28.7 kW 38.6 HP @ 2400 rpm

OPERATING WEIGHT
3675 – 3825 kg
8,100 – 8,430 lb

BUCKET CAPACITY
0.5 – 0.6 m³
0.7 – 0.8 yd³

PRODUCTIVITY FEATURES



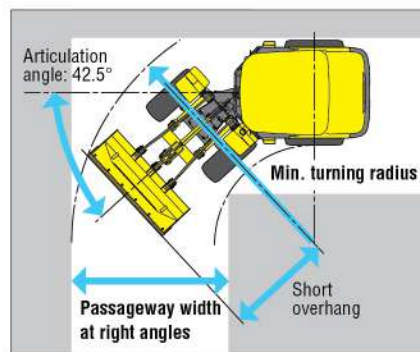
New high-power engine allows any operation to be carried out with minimal effort.

Featuring a new high-power and flexible Komatsu engine. Combined with electronic control HST with minimum power loss, Komatsu engine allows the machine to perform any operation with minimal effort.

Allows easy operation even in narrow spaces. Excellent machine operability and stability.

Short overhang structure and increased articulation angle

Maneuverability has been increased through a redesign of the chassis layout. The machines prove their worth when operated in narrow spaces.



Min. turning radius (outer): **3825 mm 12'7"**
 Passageway width at right angles: **2460 mm 8'1"**
 (Machine with standard specifications)

Rear axle oscillation system

Following the uneven ground surface, the rear axle oscillates to keep the machine horizontal and stable. When operated on rough roads, the swing and vibration are minimized and you can smoothly complete your work while positioned on the comfortable operator's seat.



Note: The photo at right was taken for advertising purposes only. Do not leave your machine on a slope for security reasons.

Long wheelbase and wide tread

In addition to the short overhang structure, the machines feature long wheelbase and wide tread providing excellent stability both in operation and traveling.



Wheelbase: **1900 mm 6'3"**
 Tread: **1250 mm 4'1"**

Electronic control

HST (Hydrostatic Transmission)

Electronic-control HST allows operation of the machine as you desire.

The electronic-control HST allows any operator to start, accelerate and stop the machine by using accelerator control only. Also, you can adjust the maximum travel speed using the stepless speed control switch according to the work you are engaged in.

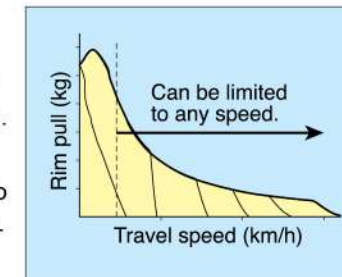
The maximum rim pull can be set to any of 3 stages using the traction control switch to tailor the machine to operating conditions.



Speed control switch Traction control switch

Speed control function

The maximum travel speed can easily be set from 3 to 15 km/h using the speed control switch. Max speed is infinitely, variable up to 15 km/h to give the operator optional control at all times.

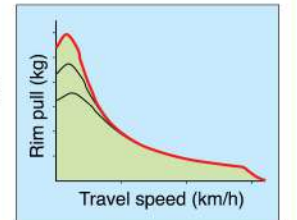


Traction control function

The maximum rim pull can be set to any of 3 levels according to the work you are engaged in.

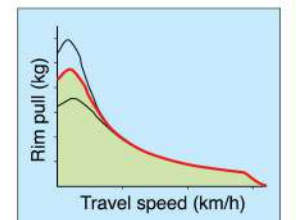
P mode

Appropriate for operations requiring an extra burst of rim pull on demand such as ground leveling, grading, excavating and piling.



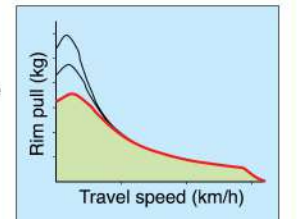
N mode

Appropriate for loading operations such as V-shape loading, aggregate loading and load-and-carry operation.



S mode

Appropriate for operations carried out on soft and slippery ground such as snow clearance and livestock farming.



ATT mode

Reserved mode

Floor-mounted inching pedal allows easy machine maneuvering for loading.

The floor-mount inching pedal puts the operator in full time control of his machine. As the travel speed is easy to control, you can easily stop the machine at the precise loading position.



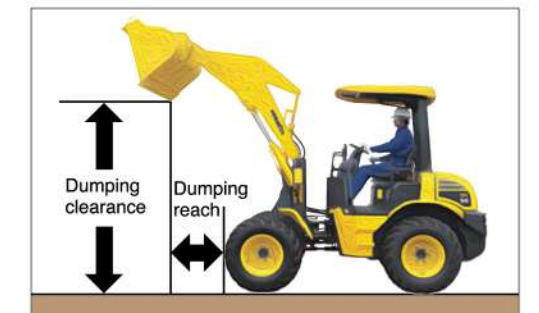
Electric auto leveler allows easy operation of the bucket.

When the bucket is lowered to the ground, the bucket bottom becomes level automatically.



Good dumping clearance and reach

The dumping clearance and reach of the machine allow for efficient loading in to a dump truck or a hopper, and for stockpiling work.



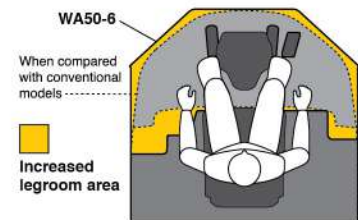
Dumping clearance: **2475 mm 8'1"**
 Dumping reach: **900 mm 2'11"**

OPERATOR COMFORT



Comfortable operator's compartment featuring increased legroom

The legroom area has been increased by 23% (over that of previous models). Ample operating space assures comfortable operating conditions.



Single-lever bucket control

You can operate both the boom and the bucket using a single control lever. The lever makes it easy to use and easy to learn.



Very comfortable operator's seat

Featuring a luxurious seat with a sliding mechanism. This comfortable seat can minimize operator fatigue. A suspension seat is optionally available.



Small-diameter steering wheel allows you to operate the machine as you would drive a passenger car.

Featuring a steering wheel with a diameter 17% smaller than that of conventional models. As you do not need to change your driving posture frequently, your fatigue will be reduced and you will be able to control the machine as you would drive a passenger car.



Easy-to-clean floor mat flush with the entrance frame

The floor mat is flush with the entrance frame so the operator can easily sweep out the cab and keep his environment clean.



Easy operation by simple lever control

Electric forward/reverse selector lever

You can switch the forward and reverse machine movement with the simple lever control.



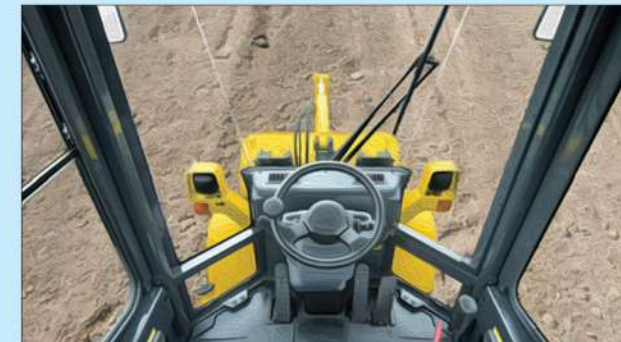
Operator's cab specification (optional)



Newly designed large operator's cab with wide visibility and comfortable seating

Pillar-less front cab glass for excellent visibility

As pillar-less glass is used in the front and rear windows, you will have excellent visibility from the operator's seat.



Wide operating space

Newly designed large operator's cab has increased legroom area that is 23% larger than that of previous models. Ample operation space assures you a comfortable operating space.



Walk through cab

The leg area is clear and you can walk through from the right or left sides as desired.



Fresh air type heater and defroster as standard equipment

Allows for comfortable operation even in cold climates. A fresh air type air conditioner is optionally available.



Standard equipment



Front working lights



Rear working lights



Rear wiper



Switch panel

Optional



Suspension seat

- Fresh air type air conditioner
- AM/FM radio

ADDITIONAL FEATURES

ROPS and canopy protect the operator from the elements.

Rear dual-post ROPS, head guard canopy, and an auto rewinding seat belt are installed as standard equipment.



Excellent visibility for secure and reliable operations

Frontal visibility is clear thanks to the rear dual-post ROPS canopy design and the optimized layout of the monitor unit. As the bucket movement is clear, you can control it accurately. The cab machine (optional) uses pillar-less glass for both the front and rear windows resulting in a very wide field of view. Also, the round-surface design of the engine hood realizes excellent rearward visibility.



Canopy



Cab specification machine (optional)

Easy-to-use access ladder

The height and width of ladder steps have been optimized based on ergonomic design principles. The rear posts of the canopy do not block you when you climb up the ladder.



Anti-slip floor mat



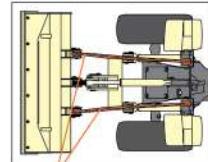
Large counterweight to protect the rear and rear side sections of the machine

The machine has a large counterweight to protect the main body should it be impacted while moving backward. Also, the rear combination lamps and exhaust pipes are built into the counterweight so that damage to them will be minimized in the case of a collision.



New boom design permitting excellent front visibility

The machine has a new "Delta boom" so that you can easily observe the front tires and the bucket side plates from the operator's seat.



Delta boom

High braking performance assures reliable operation.

HST travel brake

When you release the accelerator pedal, the HST (hydrostatic transmission) travel brake is automatically activated. This function allows you to operate at ease even in narrow spaces.

Sealed wet-type disc brakes featuring high braking performance and long service life

The machine uses sealed wet-type disc brakes that feature high braking performance even when the machine is on soft or wet ground. The brake discs have high wear resistance and long service life.

Hand parking brake

The machine has a hand brake lever allowing for easy parking. If the operator tries to move with the parking brake applied a mechanism will prevent the machine from moving. The "parking brake alarm buzzer" sounds when the machine is parked without applying the parking brake.

Overrun control system

Patent pending

Electronic-controlled overrun control system assures safe downhill travel and prevents overload on the power train and braking system.

Caution: When you travel down a steep slope, you will need to apply the travel brake.

Bucket leveler plates allow you to quickly check the angle of bucket.

The right and left leveler plates are mounted at the easy-to-see locations on the bucket. You can easily check whether the bucket is horizontal or not.

INCREASED RELIABILITY AND SERVICEABILITY

Easy-to-maintain designs allow quick and easy daily checks and maintenance.

Single-touch full-open hood

You can open the engine hood using a single-touch operation, and you can quickly complete daily checks and maintenance of the machine.

Remote and collective arrangement of filters

All filters are mounted in a remote place collectively. You can easily check and replace the filters.



Side-by-side cooling system

The oil cooler and radiator are installed side-by-side in the optimum position for ease of cleaning. They provide high cooling efficiency.



Automatic air bleeding system

Repeating 20-second engine cranking with the starting switch set to START position two or three times bleeds air from the fuel system. This system allows you to restart the engine quickly even when the machine has run out of fuel.

Pre-cleaner (optional)

The pre-cleaner can remove straw and sawdust in dusty environments and prevents early clogging of the air cleaner.

Note: The pre-cleaner cannot be installed on the cab specification machine.

Components that prevent machine failure and improve machine reliability

Face-seal type hydraulic hose / tube connectors

Greatly increases the reliability of hydraulic line system.



DT connectors

DT connectors with very tight sealing performance prevent failures of the electrical system.



Tapered roller bearings

Highly durable tapered roller bearings are used in the frame center hinge. As the greasing interval of tapered roller bearings is 1,000 hours, maintenance can be minimized.



ENVIRONMENTAL FEATURES

Low Emission Engine

This engine meets EPA Tier 3 and EU Stage 3A emissions regulations, without sacrificing power or machine productivity.

Low Operation Noise

Enables a low noise operation using the low-noise engine and methods to cut noise at source.



SPECIFICATIONS

ENGINE

Model Komatsu 4D88E-6B
 Type Water-cooled, 4-cycle
 Number of cylinders 4
 Bore x stroke **88 mm x 90 mm** 3.48" x 3.56"
 Piston displacement **2.189 ltr** 135 in³
 Governor Mechanical, all-speed control
 Horsepower
 SAE J1995 Gross **29.7 kW** 39.8 HP
 ISO 9249 / SAE J1349 Net **28.7 kW** 38.6 HP
 Rated rpm 2400 rpm
 Meets current EPA emissions regulations

Fuel system Direct injection
 Lubrication system
 Method Gear pump, force-lubrication
 Filter Full-flow
 Air cleaner Dry-type with single radial-sealed elements and dust evacuator, plus dust indicator

TRANSMISSION

Transmission Hydrostatic, 1 pump, 1 motor variable speed control

AXLES AND FINAL DRIVES

Drive system Four-wheel drive
 Front Fixed, semi-floating
 Rear Center-pin support, semi-floating
 14° total oscillation
 Reduction gear Spiral bevel gear
 Differential gear Conventional
 Final reduction gear Planetary gear, single reduction

BRAKES

Service brakes: Mechanical, multi wet disc brakes actuate on four wheels.
Parking brake: Mechanical, wet, multi-disc brake on transfer output shaft.
Emergency brake: Parking brake is commonly used.

STEERING SYSTEM

Type Full-hydraulic power steering independent of engine rpm
 Steering angle 42.5° each direction
 Minimum turning radius at the center of outside tire **3125 mm** 10'3"

BUCKET CONTROLS

Control positions
 Boom Raise, hold, lower, and float
 Bucket Tilt-back, hold, and dump

HYDRAULIC SYSTEM

Capacity (discharge flow) @ engine-rated rpm
 Maximum flow for loader circuit
 Loader pump **46.5 ltr/min** 12.3 U.S. gal/min
 HST charge pump **24 ltr/min** 6.3 U.S. gal/min

Relief valve setting
 Loader **210 kg/cm²** 20.6 MPa 3,000 psi
 Steering **175 kg/cm²** 17.2 MPa 2,500 psi

Control valve
 3-spool open center type

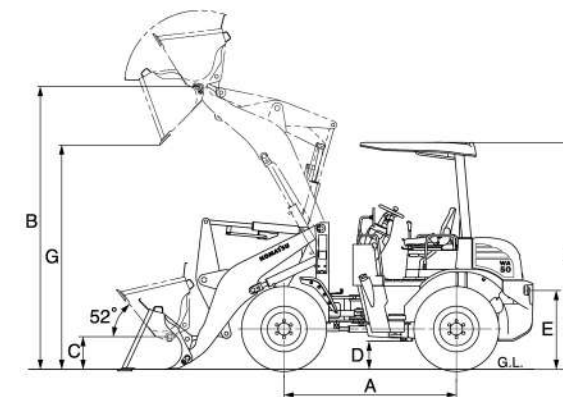
Hydraulic cylinders
 Loader and steering Double-acting, piston

Hydraulic cycle time (rated load in bucket)
 Raise 5.7 sec
 Dump 1.0 sec
 Lower (empty) 3.5 sec
 Total cycle time 10.2 sec

SERVICE REFILL CAPACITIES

Cooling system **7.0 ltr** 1.8 U.S. gal
 Fuel tank **50 ltr** 13.2 U.S. gal
 Engine **7.5 ltr** 2.0 U.S. gal
 Hydraulic system **42 ltr** 11.1 U.S. gal
 Axle (front / rear) **4.8 / 4.5 ltr** 1.3 / 1.2 U.S. gal
 Transmission **1.4 ltr** 0.4 U.S. gal

DIMENSIONS



Tread	1250 mm	4'1"
Width over tires	1650 mm	5'5"
A Wheelbase	1900 mm	6'3"
B Hinge pin height at max. height	3120 mm	10'3"
C Hinge pin height at carry position	360 mm	1'2"
D Ground clearance	310 mm	1'0"
E Hitch height	470 mm	1'7"
F Overall height, ROPS (canopy / cab)	2500 mm / 2540 mm	8'2" / 8'4"
G See Dumping Clearance Below	2475 mm	8'1"

Measured with 15.5/60-18-8PR

Bucket	Stockpile bucket with bolt-on cutting edge	
	Heaped	Struck
Bucket capacity	0.6 m³	0.8 yd ³
Bucket width	1690 mm	5'7"
Bucket weight	215 kg (with B.O.C)	475 lb
Static tipping load	Straight (canopy / cab)	2450 kg / 2580 kg 5,400 lb / 5,690 lb
	Full turn (canopy / cab)	2000 kg / 2100 kg 4,410 lb / 4,630 lb
Dumping clearance, maximum height and 45° dump angle**	2475 mm	8'1"
Reach at maximum height and 45° dump angle**	900 mm	2'11"
Reach with arm horizontal and bucket level**	1945 mm	6'5"
Operating height, fully raised	3955 mm	13'0"
Overall length	Bucket on ground	4580 mm 15'0"
Turning radius*		3825 mm 12'7"
Digging depth	0°	43 mm 2"
	10°	175 mm 7"
Breakout force	3050 kg	6,720 lb
Operating weight (canopy / cab)	3675 kg / 3825 kg	8,100 lb / 8,430 lb

* Bucket at carry, outside corner of bucket. ** At the end of B.O.C.

All dimensions, weights, and performance values based on SAE J732c and J742b standards. Static tipping load and operating weight shown include lubricant, coolant, full fuel tank, ROPS cab and operator. Machine stability and operating weight affected by counterweight, tire size, and other attachments.



STANDARD EQUIPMENT

- Alternator, 40A, 12 volt
- Axles, semi floating
- Back-up alarm
- Back-up light, rear
- Batteries, 72 Ah x 12 V
- Bucket positioner, automatic
- Cab (ROPS/FOPS) with dome light, floor mat, front and rear wiper/washer, rear view mirrors (2 outside, 1 inside), right hand and left hand door access with steps
- Counterweight
- Differentials
- Gauges (Engine water temperature, fuel level)
- Lights (Transmission neutral indicator, parking brake warning, battery charge, HST oil filter clogging, engine oil pressure, engine pre-heater, parking brake reminder, HST oil temperature, central warning)
- Engine, Komatsu 4D88E-6B
- Engine shut-off system, electric
- Engine water separator
- Fan
- Fenders, rear
- Horn, electric
- Lift cylinders and bucket cylinder
- Lights
 - Stop and tail
 - Turn signal (2 front, 2 rear)
 - Working (2 front, 2 rear)
- Loader linkage with standard lift boom
- Maintenance monitor panel
- Mono-lever loader control
- Parking brake, wet disc
- Seat belt, 2"
- Seat, rigid type
- Service brakes, mechanical, wet multi-disc, inboard
- Starting aid, intake manifold preheater
- Starting motor, 2.3 kW/12 V
- Steering wheel, rigid
- Tires 15.5/60-18-8PR (L2), tubeless and rims
- Transmission (Hydrostatic), automatic
- Transmission control, electric, steering column
- 3-spool valve for boom, bucket and attachment controls



OPTIONAL EQUIPMENT

- Seat belt, retractable, 3" wide

www.Komatsu.com

Printed in Japan 200807 IP.As(05)

KOMATSU[®]



金駿機械
GUM CHUN MACHINERY

陳列倉 Show Room: 香港新界石崗粉錦公路DD111 LOT2373&2374 (近橫台山永寧里)
DD111 LOT2373&2374 Fan Kam Road, Shek Kong, Yuen Long, N.T., Hong Kong
通訊地址 Mailing Address: P.O. Box No. 729 at Shek Wu Hui Post Office

☎ (852) 2488-9393

📠 (852) 2488-9337

🌐 www.gumchun.com.hk



CEN00350-00

Materials and specifications are subject to change without notice.
KOMATSU is a trademark of Komatsu Ltd. Japan.